

# Special Section Salutes Area High School Graduates

This Issue . . . One Section . . . 12 Pages . . . Plus Supplement

## THE WAYNE HERALD

WAYNE, NEBRASKA 68787, MONDAY, MAY 22, 1978  
Second Class Postage Paid at Wayne, Nebraska ONE-HUNDRED SECOND YEAR NUMBER EIGHTY-TWO  
Published Every Monday and Thursday at 114 Main, Wayne, Nebraska 68787

**On the Inside**  
★ Winside Honors  
★ Wakefield Awards  
★ Top Athletes

### Savings to Residents When Operational

# Compactor Station Nears Completion

The Wayne compactor station is less than two months away from completion as workmen from Highway Equipment and Supply of Lincoln last week installed the compactor and a receiving receptacle in the recently completed building.

Fred Brink, city administrator, said the station should be in operation the first part of July. The council is now considering user rates and how the city will pay for the station.

Brink said the present sanitary landfill on the airport will be cleared and covered and the land returned for use by the airport.

The administrator said the compactor station when operational will mean about a two mill savings to residents of Wayne.

"The landfill has been costing the city about \$25,000 to \$30,000 a year to operate," Brink explained.

"We expect the compactor station to be self-supporting."

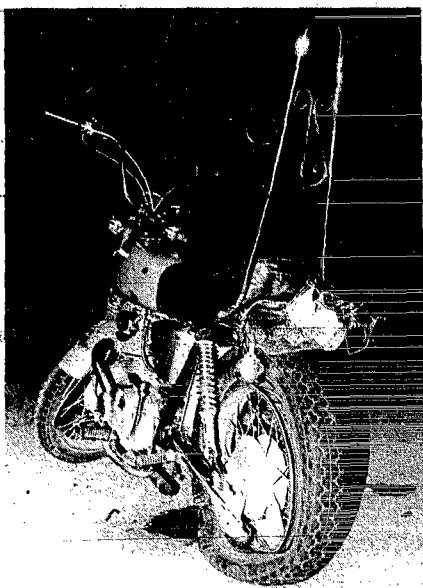
The bid price of the station is \$85,295.50. Otto Construction of Wayne is the general contractor. The equipment cost is \$21,510.00.

The compactor will handle five cubic yards of refuse which will be compacted by a ram with a 150,000 pound working force.

The city has contracted with Ronald Roots, Fremont, to haul away the refuse to an approved landfill near Norfolk. The charge to the city is \$1.78 per cubic yard for 40 or more cubic yards.

The receiving receptacle holds 40 cubic yards and is detachable. Roots will pick up the receptacle and leave one in its place.

Details as to uses and charges will be announced as soon as the council makes its decision.



### 'Taiwan' Washer Poses Problem

Peoples Natural Gas is alerting their customers to a warning recently issued by the U.S. Consumer Product Safety Commission regarding certain imported manually operated gasoline shut-off valves which may leak, creating the possibility of fire and explosion.

According to the commission, the defective valves, all manufactured in Taiwan, have been distributed throughout the United States since 1976. They can be identified by the number "34" or "35" stamped on the side and the word "Taiwan" on the washer.

According to Keith Mosley, See "TAIWAN", page 8

### Mark Shufelt Receives Grant

A Wayne High School senior has been selected to receive a "President's Scholarship" to Wayne State College.

Mark Shufelt, son of Mr. and Mrs. Allen Shufelt, was graduated Sunday from Wayne High School where he was active in speech, drama and choir. He plans to major in theatre and speech at WSC.

Shufelt was one of nine seniors to receive the scholarships. They are awarded annually to qualify students not qualified for financial aid through WSC.



### Number....Please!

TRYING TO match a myriad of wires to restore telephone service to a 12-block area in Wayne Thursday are (left to right) "Smoke" Price, Norfolk, outside equipment technician for Northwestern Bell; Jack Frohloff, Wayne plant manager and Jim Parks, Norfolk plant manager. The 400-pair cable was cut Thursday morning on the north corner of 3rd and Logan Streets. Service was restored Thursday evening.

### Set-Aside Passes 50 Percent Mark

Some 54 percent of Wayne County farmers have signed up in the federal 1978 wheat and feed grain set-aside program, according to Ray Butts, Wayne County executive director of the Agricultural Stabilization and Conservation Service.

Butts said as of Thursday, 685 of 1,257 Wayne County farmers had signed up for the program. He said he felt the grain reserve and the set aside have a positive effect on grain prices.

The deadline, originally set for May 15, was extended to May 31. However, a spot check indicated the majority of farmers in Northeast Nebraska have made up their minds and the percentage will not change a great deal.

Participation ranges in the area range from a low of 47 percent to a high of 73 percent. Stanton County registered the highest percentage.

Sixty-six percent of the farms in Nebraska have signed up for the program, representing 73 percent of the farm acreage. The program requires that ten percent of the corn, grain sorghum and barley acreage not be planted, with the wheat requirement 20 percent of the acreage. The farmer may decide to set aside an additional ten percent on an optional basis.

### Farmer 'Good' After Accident

A rural Wayne farmer was reported in "good" condition Saturday at St. Luke's Medical Center, St. Louis, where he is in the intensive care unit for treatment of injuries received in a tractor accident.

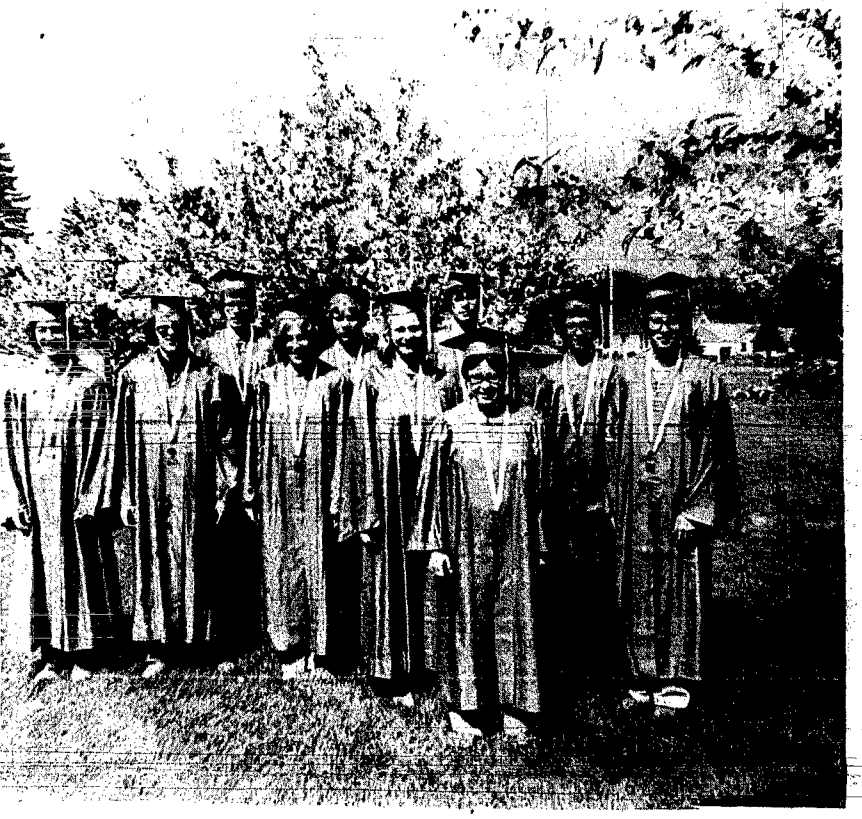
Wallace Victor, 51, was injured Thursday when the rear tractor tire ran over him while he was planting corn.

Mike Wallace, his son, said his father was trying to start the tractor when the accident happened. He reportedly sustained injuries to his arm, leg and chest.

He was first taken to Providence Medical Center and transferred to St. Luke's.

A Hoskins farmer received injuries to his foot as the result of a tractor accident Wednesday.

Tom Broekemeier was taken to a Norfolk hospital by the Hoskins Rescue unit.



RANKING IN THE top ten percent scholastically of the 1978 Wayne High School graduating class are these seniors who were graduated Sunday. They are (left to right, back row) Rodney Koch, Bryan Ruwe, Charles McLain, Dennis Fier and Roger Sals. (Front row, left to right) Joe Teeter, Ron Utecht, Laura Hagemann (salutatorian), Susan Rethwisch and Joleen Wiener (valedictorian).

### Joleen Wiener, Laura Hagemann Top Students

# Grads Told About 'Strength'

The number one and number two ranked scholastic Wayne High School graduates are Joleen Wiener, valedictorian and Laura Hagemann, salutatorian.

Miss Wiener is the daughter of Mr. and Mrs. Darrell Wiener and Miss Hagemann is the daughter of Mr. and Mrs. Ervin Hagemann, Jr.

Miss Wiener plans to attend Midland Lutheran College with a major in nursing. She has been awarded the Board of Trustees Scholarship, the Lutheran Brotherhood Senior Scholarship to Midland Lutheran.

She also received the John G. Neihardt Creative Writing Scholarship from Wayne State College and a Writing Scholarship, also from Wayne State.

Her activities in school included German Club, AFS and band. Miss Hagemann plans to attend Wayne State College where she will major in the German language.

Scholarships include: Board of Regents Scholarship, University

of Nebraska Lincoln; Board of Trustees Scholarship from Wayne State.

Her activities in school included Future Homemakers of America, German Club and dramatics.

The two were among some 104 Wayne High School seniors who were graduated in commencement ceremonies held Sunday in the Willow Bowl on the Wayne State campus.

Dr. Owen A. Knudsen, superintendent of the Omaha public schools, was the guest speaker, using the topic "Origins of Strength."

### The News in Brief

#### Bereuter Here

Doug Bereuter, Senator, District 24, Uica and candidate for First District congressman, will be among dignitaries expected to be on hand for a ribbon-cutting ceremony Tuesday at Heritage Homes of Nebraska, Inc., marking the first modular home to come off the production line.

Representatives from Peoples Natural Gas Company, NPPD, Nebraska Department of Economic Development and local officials will take part in the ceremony which will begin at 2 p.m.

#### Cancer Drive Nets \$84.50

Mrs. Gary Landanger, chairman of the Cancer Drive at Carroll, reported \$84.50 was collected.

Mrs. Landanger was assisted by Arnold Junck, Mrs. Charles Whitney, Mrs. Bill Landanger, Mrs. Dennis Rhode and Mrs. Brian Erdman.

#### Awarded Grant

A Wayne State College instructor is one of five humanities scholars to be awarded grants of \$1,000 each to research topics of importance to Nebraskans.

Michael S. Blayney, department of history, will study the similarity between black characters in Alex Haley's "Roots" and the popular image of the American Indian as receives.

#### Grant to Wayne State

Wayne State College was among 59 educational institutions sharing in the over \$53,000 made possible through the Mutual of Omaha Voluntary Aid to Education Program this year.

Under the program, Mutual and United match donations made by employees to educational institutions of their choice.

Since the program's inception in 1960, the Companies and participating employees have combined to donate more than \$350,000 to the betterment of higher education. Employees donated a record total of \$26,977.50 in 1977, and Mutual and United matched this amount.



DR. FRANCIS R. HAUN

### Joins List Of May Graduates

Joining Wayne High School graduates this spring is Francis R. Haun, superintendent of the Wayne-Carroll Community Schools.

Haun was awarded his Doctorate from the University of Nebraska earlier this month.

Dr. Haun has been Wayne-Carroll district superintendent for 14 years.

He was graduated from Yankton College with a bachelor of arts degree in 1950. He was awarded a master's degree from the University of South Dakota in 1956 and earned a specialist degree from USD in 1958.

He began his teaching career at Freeman, S.D., as an English and science instructor from 1953 to 1955. He was named high school principal at Coleridge in 1955, serving in that capacity for one year when he was named superintendent of the district.

Dr. Haun was superintendent of the Coleridge schools until 1960 when he accepted a similar position with the Ainsworth school district. He served at Ainsworth until 1964 when he came to Wayne.

His professional and community activities include: American Association of School Administrators; Nebraska Association of School Administrators (past president); Northeast Nebraska Association of School Administrators (past president); He is a member of the Wayne Kiwanis club, an Elder in the United Presbyterian Church of Wayne, a past director of the Wayne Chamber of Commerce, serving on a committee to See JOINS, page 8



JOLEEN WIENER



LAURA HAGEMANN

Prices Slashed on \$500,000

of merchandise

# TENT SALE

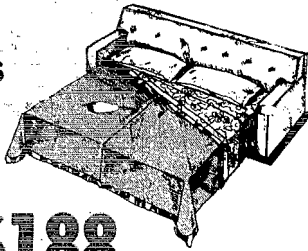
## SLEEP CENTER SELL-OUT

Quality Sleeper Sofas

Queen Size Sleepers,  
choice of two colors.  
Reg. \$316 **\$268**

Flexsteel Queen Size  
Sleeper, herculon  
cover, TV headrest  
Reg. to \$572. **\$388**

Flexsteel Queen Size  
Sleepers in several  
covers, guaranteed  
construction. Reg. to  
\$630 **\$488**



**\$188**

Great for Guests, in  
Love Seat size.

Many Others to Choose From

## Yearend Carpet Savings!

Save Up To 57% on  
In-Stock Items

## REMNANTS

OVER 250 ROLLS TO CHOOSE FROM

Maslands

MAGNIFICENT

Mozambique

A superb example of  
sophisticated styling  
and excellent carpet  
construction, on jute.

**\$9<sup>95</sup>**  
sq. yd.

Columbus

Priority

An excellent cut loop  
with soft colorations,  
on jute.

**\$6<sup>95</sup>**  
sq. yd.

Maslands

Harlow

A lustrous plush car-  
pet with excellent tuft  
definition. Sensuous  
and warm to the hand,  
on jute.

**\$13<sup>95</sup>**  
sq. yd.

Maslands

Janine

A superb pencil point  
plush - made of 100%  
dacron polyester, on  
jute.

**\$7<sup>95</sup>**  
sq. yd.

Maslands

Picture  
Perfect

Is smooth as silk and  
soft as whipped cream  
A handful of heaven  
which performs under  
foot as well, on jute.

**\$7<sup>95</sup>**  
sq. yd.

Trends

Magnificent  
30's

Rich and thick with a  
wool - like warmth,  
extra bright luster and  
shimmering colors, on  
jute.

**\$7<sup>50</sup>**  
sq. yd.

Philadelphia's

Adoration

Muted tones achieved  
with a multi-level ef-  
fect, on jute.

**\$8<sup>95</sup>**  
sq. yd.

Outdoor Grass

Carpeting

6 colors in stock. 2-  
year wear guarantee.

**\$4<sup>95</sup>**  
sq. yd.

9'5" x 12' Red Plush Rubber \$83.00  
12' x 16' Gold Flower Plush Jute \$117.00  
12' x 20' Orange Candy SR Plush Rubber \$70.00  
12' x 12' Blue Plus Rubber \$74.00  
5' x 8' Green Tones Hi Lo Plush Jute \$22.00  
6'10" x 11'10" Rust Level Loop Jute \$38.00  
12' x 20' Rust on Gold Plush Jute \$147.00  
11'4" x 14'4" Belge HI Lo Level Loop Jute \$91.00  
12' x 14'2" Green Plush Rubber \$81.00  
9'7" x 12' Brown Tones Level Loop Jute \$85.00  
11'4" x 12' White on Brown HI Lo Plush Rubber \$92.50  
8'6" x 12' Circus Pink HI Lo Plush Jute \$76.00  
12' x 14'11" Green Gold Print Level Loop Rubber \$89.00  
12' x 23' Brown Tones Print Level Loop Rubber \$146.00  
12' x 14'6" Lavender-Burgandy HI Lo Plush Jute \$128.00  
12' x 20' Rust Tones Level Loop Jute \$93.00  
9'5" x 8'10" Rust Green Level Loop Jute \$44.00  
12' x 10'8" Green Tones Plush Jute \$91.00  
15' x 19' Bronze Tones HI Lo Level Loop Jute \$250.00  
Reg. \$420.00  
15' x 15'7" Autumn Tones Pattern Plush Jute \$128.00  
15' x 14'2" Green Gold Pattern Plush Jute \$155.00  
12' x 8'3" Candy Stripe Level Loop Rubber \$29.00  
10'10" x 8'3" Gold Tones HI Lo Plush Rubber \$85.00  
12' x 14'4" Light Green Plush Jute \$95.00  
12' x 11'5" Brown Silver Level Loop Jute \$83.00  
12' x 11'3" Green Gold HI Lo Plush Jute \$80.00  
12' x 12'8" Gr-Go-Or In-Out Stripe Rubber \$88.00  
9'3" x 12' Go - Rust Level Loop Rubber \$40.00  
12' x 27' Gr - Yellow HI Lo Plush Jute \$160.00  
12' x 19'2" Green Tones Cut Loop on Rubber \$133.00  
12' x 17'1" Orange Cut Loop on Rubber \$117.00  
12' x 14'9" Green on Green Cut Loop on Rubber \$101.00  
12' x 18'8" Rust Tones Cut Loop on Rubber \$116.00  
12' x 15'7" Brown Tones Cut Loop on Rubber \$108.00  
12' x 17'6" Green & Gold Cut Loop on Rubber \$120.00  
12' x 21'2" Gold & Brown Cut Loop on Rubber \$148.00  
12' x 12'7" Gold Blen Cut Loop on Rubber \$88.00  
12' x 15'3" Lime Green Cut Loop on Rubber \$105.00  
12' x 16'2" Gold Green Print Level Loop Kitchen \$82.00  
12' x 18'9" Green Gold Rust Plush Checker Rubber \$174  
12' x 11'1" Green Rust Gold Level Loop Print Rubber \$57  
12' x 11'0" Rust & Gold Plush on Rubber \$109.00  
12' x 21'4" Gold & Green Level Loop Rubber \$113.00  
12' x 13'9" Lavender & Pruple Plush on Rubber \$91.00  
12x 14' Brown & Gold Level Loop Kitchen Rubber \$74  
12x 15'9" Blue Brown Field Level Loop Rubber \$83.00  
12' x 13'2" Blue Plush on Rubber \$88.00  
12' x 16'5" Green Twist on Rubber \$94.00  
12' x 17'1" Orange Twist on Rubber \$98.00  
12x 15'3" Gold Twist on Rubber \$92.00  
12' x 18'6" Orange Gold Brown Checker Rubber \$118.00  
12' x 15'4" Orange & Green on Rubber Level Loop \$83.00  
12' x 16'1" Orange & Brown Checkers Rubber \$99.00  
12' x 17'2" Green & Brown Level Loop Rubber \$90.00  
12' x 13'4" Blue Tones Cut Loop on Rubber \$107.00  
12' x 15'2" Blue Brown Cut Loop on Rubber \$99.00  
12' x 17'3" Orange Brown Tone Level Loop Kit \$91.00

A partial listing of some  
of the remnants in this  
sale. We have bought  
remnants specifically for  
our Tent and Warehouse  
Sale and will be having  
additional ones daily.



This is Just  
a Sample  
Listing of Our  
Bedding  
Yearend Prices

**TWIN SIZE**  
**\$39**

Mattress or Box  
Full ..... \$59

Special Factory  
Purchase

4 Pc. Hollywood Bed

Twin ensemble  
complete with mattress,  
box frame and choice  
of headboard



**\$188<sup>88</sup>**

Adjustable bed frame



Twin-full framé  
scientifically designed

**\$11<sup>88</sup>**

SAVE

4 Drawer Chest

Maple Finish  
Only



**\$47<sup>88</sup>**

(White Supply Lasts)

## PAINT & WALL PAPER BARGAINS

Fade & blister resis-  
tant, flat finish with  
excellent durability,  
an economical alkylid  
fortified, latex free-of  
lead pigments, water  
clean up, 2 hour  
drying.  
Reg. \$9<sup>99</sup> gal.



Now \$7<sup>06</sup> gal.

Barn paint - white, for  
ranch, farm and pad-  
dock. Free of lead  
pigments and low in  
cost. Its breather type  
white finish gives blis-  
ter - resistant protec-  
tion.  
Reg. \$10<sup>99</sup> gal.



Sale \$7<sup>06</sup> gal.

Ready to use, popular  
priced, good quality  
barn paint, is free of  
lead pigments, has  
good body and hides  
very well, gives good,  
economical, years of  
long protection.  
Reg. \$11<sup>99</sup> gal.



Sale \$8<sup>22</sup> gal.

SAVE \$2.50 GAL.

LATEX HOUSE PAINT

**\$5<sup>49</sup>** GALLON  
WAS \$7<sup>99</sup>

•Economy Priced  
•All surfaces - wood,  
Masonry, Metal  
•White Only



Wallpaper 1<sup>st</sup> Sale - Buy one roll at regular price, get second roll for 1<sup>st</sup>

Sale Held  
Behind Bestt Decora-  
tors and L-Bees Donut  
Shop at 708 South  
13th. Please also use  
14th St. Entrance.



Furniture by Bestt  
Bestt Decorators, Inc.

Sale Held  
Behind Bestt Decora-  
tors and L-Bees Donut  
Shop at 708 South  
13th. Please also use  
14th St. entrance.





# Mosley, Ginn Head Award Winners

It really came as no surprise when Sydney Mosley and Tom Ginn were announced Wayne High Athletes of the Year at the Athletic Award Convocation Thursday night.

She was also All-Tourney scoring leader. In addition, Mos-

ley was picked as an All-Tourney player in volleyball and Most Valuable in Wayne Girls' track.

Tom Ginn was All-Conference in football, baseball, and basketball, and made the All-Conference Tournament basketball team. He was selected Most Valuable Player in basketball and baseball along with other various awards.



MOLLER AWARD winners Kelly Frevert and Vic Sharpe.



ATHLETES OF THE YEAR: Sydney Mosley and Tom Ginn.

# Ginn Tops Blue Devil Stats

The Wayne baseball season is over and the players have selected Junior Tom Ginn as most valuable player. Ginn was the team leader in seven categories with a .438 batting average, a .692 slugging average, 17 hits, 18 runs, nine stolen bases, two triples and two doubles.

The team ended the year with an 11-3 record, losing to Lincoln East, Lincoln High and Wakefield. The Blue Devils gained 84 singles, nine doubles, 367 triples, and four home runs in 344 trips to the plate for a team batting average of .302.

Wayne added to its hitting with 104 runs to 50 for opponents, stole 28 bases, and walked 71 times.

Mark Gansbom led the Blue Devils in RBI with 14 and tied Ginn as team leader in doubles with two. Kevin Murray's fielding average of .970 was the team high.

Jeff Zeiss, Al Nissen, Murray, and Dan Mitchell each had one home run and Mitchell was the only player to single, double, triple and homer. Dennis Carroll had the most bases on balls with 10.

In the pitching department, Vic Sharpe was the work horse,

pitching 40 innings with 38 strikeouts and a 5-2 record. Ginn went 25 innings, striking out 36 batters and gaining a 2-1 record. Dennis Carroll was the only Blue Devil with a perfect record, finishing 4-0 with 28 strikeouts in 21 innings.

Blue Devils with batting averages of .300 or over are as follows:

Tom Ginn	438
Mark Gansbom	378
Dean Carroll	374
Dan Mitchell	341
Al Nissen	313
Kevin Murray	304
Jerry Goeden	300

Awards presented are as follows:

**Football**  
Outstanding Defender — Kevin Murray  
Most Improved — David Hansen  
Most Valuable — Kelly Hansen  
Honorary Co-Captains — K. Hansen, Kevin Murray

**Baseball**  
Most Valuable — Tom Ginn  
Team Captain — Ginn  
Leading Scorer — Ginn  
Leading Rebounder — Ginn  
Most Assists — Jeff Zeiss  
Highest Free Throw Percentage — Vic Sharpe  
Most Improved Player — Jay Davie

**Volleyball**  
Most Valuable — Peg Pinkelman  
Most Improved — Lesa Barclay, Stacy Jacobmeier  
Honorary Captain — Kelly Frevert

**Girls' Track**  
Most Valuable — Sydney Mosley  
Most Improved — Lynn Surber  
Honorary Captain — Lisa Nuss

**Wrestling**  
Most Takedowns, Most team points, Best Season Record, Most Pins — Danny Mitchell  
Fastest Pin — Larry Hank

**Baseball**  
Most Valuable — Ginn  
Highest Batting Average — Ginn  
Honorary Team Captain — Vic Sharpe

**Track**  
Most Valuable — Dave Hamer  
Most Improved — Tod Heier  
Captain — Jeff Backstrom

# Howell's Bazata Signs with WSC

Howell's High School senior Dan Bazata had signed a "Letter of Intent" to play football for the Wayne State Wildcats beginning in the fall semester.

Bazata, son of Mr. and Mrs. Delvan Bazata of Howells, was named to the Mid-State "All-Conference Team" two years, the Fremont "All-Area Team" and honorable mention "All-State" during his football career at Howells High.

Bazata will compete with a number of top athletes for a starting position with the Wildcats. WSC finished their first year in the Central States Conference with a 7-3 record and second place last fall. Nine defensive and six offen-

sive starters will return from last fall's team, including the CSC's leading rusher, sophomore Bob Barry of Battle Creek. Barry rushed for 1130 yards last fall to set an all-time rushing record at WSC.

The CSC consists of eight college teams, including Kearney State College, Missouri Southern, Missouri Western, Pittsburg-Kansas, Fort Hays, Kan., Emporia, Kan. and Washburn-Kan.

Bazata will be coached by the CSC 1977 "Coach of the Year," Del Stollenberg, who has been with WSC since 1969.

The Wildcats begin their 1978 season Sept. 9 against Chadron State at Wayne Memorial Stadium.

# Junior High Places Fifth

The Wayne seventh and eighth grade track team ended its season with a fifth place finish in the Schuyler Invitational, Tuesday.

Jim Sperry was the top finisher for Wayne with third place in the 120 yard hurdles and sixth in the 100 yard dash. Eric Brink took fifth place in the same two events.

In the pole vault, Roll Schultz placed third and Mark Kubik finished sixth. Rick Pohlmann, fourth in the shot put, and David Wimer, fourth in the 800 yard run, were the other top individuals. The 400 and 800 relay teams both finished fourth to round out the scoring.

Jim Sperry was the top finisher for Wayne with third place in the 120 yard hurdles and sixth in the 100 yard dash. Eric Brink took fifth place in the same two events.



The word papyrus comes from papyrus, the giant water reed from which Egyptians manufactured a writing material.

# Sports

## Twelve Teams Enter In Wakefield Tourney

By LEFTY OLSON

The seventh annual Chuck Ellis Memorial Baseball Tournament will begin in Wakefield, Friday, May 26 and continue through May 30. Twelve teams representing the states of Iowa, South Dakota, and Nebraska will be competing for the title.

Seven of last year's 12 tournament teams later qualified for state tournament play. Six will be returning for this year's tournament. Missing will be Omaha Creighton Prep, which met with a scheduling conflict.

Leading the returnees is defending champion Sioux Falls, one of the most successful teams

in the history of the tournament. They finished second in their state playoff. Sioux City Heelan and Pender-Bancroft also had similar fates. Aberdeen (SD) and Wakefield placed third in their respective states, and West Point also was a state entrant.

Completing this year's alignment are Sioux City schools, West and North, and Norfolk, O'Neill, Wayne and Lincoln East. Lincoln East is the only team which hasn't appeared previously.

Several outstanding athletes have participated in past tournaments. Ken Cvedilik of Council Bluffs Thomas Jefferson is now in the Kansas City Royals farm system. Another TJ player, Bob Knezevich had one of the lowest earned run averages in the nation in 1977, at Southern Illinois University.

Al Benson of Coleridge was a regular at Iowa State where he set a school home run record. Heelan's Mike Courey was a reverse quarterback on Notre Dame's national championship football team last fall.

The 1978 schedule:

May 26 — Wakefield versus West Point, 5:30 p.m.; Sioux City West versus Norfolk, 7:30 p.m.

May 27 — Pender-Bancroft versus O'Neill, 5:30 p.m.; Sioux City North versus Wayne, 7:30 p.m.

May 28 — Sioux City Heelan versus winner of game No. 1, 3:00 p.m.; Sioux Falls versus winner of game No. 2, 5:00 p.m.; at 7:30 the two winners will play in a semi-final game.

May 29 — Lincoln East versus winner of game No. 3, 3:00 p.m.; Aberdeen versus winner of game No. 4, 5:00 p.m.; at 7:30 the two winners will play in a semi-final game.

May 30 — Consolation at 5 p.m.; Championship at 7:30 p.m.

## IT'S TIME!

TO

# BROADCAST HERBICIDE on Soybeans and Corn.

WE'LL GET YOUR FIELDS READY — NOW!

**SHERRY BROS. FARM & HOME CENTER**  
Phone 375-2092

West of Building

## Trophy Goes To Brudigan

Gene Brudigan of Hoskins won the trophy dash and the A feature as Husef's Speedway of Sioux Falls opened the racing season. Brudigan placed second in the first heat to qualify for the two races.

**Men's County Softball League**

2 Danielson Drywall	4-0
10 T.J.'s	4-0
9 Waldbaums	4-0
12 The 4th Jug	2-0
4 Midwest Land Co.	2-2
11 Surbers	2-2
8 Valley Squire	2-2
5 El Toro	1-3
7 Otto Construction	1-3
3 Dick's Dairy Sweet	0-2
4 Sherman Construction	0-4
1 Melodie Lanes	0-4

Schedule:

May 22: 8-1 North Field; 9-7 South Field.  
May 23: 2-3 North Field; 10-6 South Field.  
May 24: 12-4 North Field; 11-5 South Field.

Game of the Week: T.J.'s vs. Midwest Land, Tuesday, South Field. Game Games start at 7 p.m.

# ENTERTAINMENT FOR THE WHOLE FAMILY!

# golfing

Join the Wayne Country Club Today!

Home Of Frigidaire & Maytag Appliances	Pros	Cons
WE SERVICE WHAT WE SELL	13 (T. McClain, R. Wilste 24 W. Bressler, K. Carston)	35 (P. Griess, R. Etter, 20 C. Ward, R. Kelton)
KUGLER ELECTRIC	17	22
Russ Tiedtke, Owner	11	26
	20	33
	7	33
	14	25
	18	34
	20	33
	2	38
	1	37
	4	30
	15	37
	5	16
	19	28
	16	31
	8	13
	6	26
	3	27
	12	10
	9	29
	10	40

**Shrader - Allen Hatchery**  
HYLINE CHICKS & GOOCH FEED  
Phone 375-1420  
'Good Eggs To Know'

**JEFF'S CAFE**  
FOR YOUR Dining Enjoyment  
Morning, Noon or Night

**A Players**

Darrel Fuelberth	36
John Swigler	38
H. Schroeder	39
Jason Rascely	39
Terry Luft	39
Del Stollenberg	39

**The Wayne Herald**  
FOR ALL YOUR PRINTING NEEDS

**B Players**

Steve Hix	41
Dean Backstrom	41
Ralph Etter	42
Dick Berry	42
Budd Bornhoff	43
Wayne Tiefgen	43
George Thorbeck	43
Bob Bergt	43
Wayne Marsh	43

**WAYNE COLD STORAGE**

EAST HWY. 35

IMPORTED **Heineken** HOLLAND BEER

HOME JUICE **ORANGE JUICE**

PHONE 375-3085

**State National Bank & Trust Co.**  
122 Main  
Phone 375-1130

For After Golf League  
SNACKS & REFRESHMENTS  
The El Toro Lounge & Package

**Wayne Grain & Feed**  
200 Logan  
Phone 375-1322

# Wayne Slips By Norfolk In Town Team Primer

The Norfolk and Wayne town baseball teams battled in a game of walks, Wednesday, and Wayne came out on top as Norfolk walked Mike Meyer with the bases loaded in the 10th inning to give the Wayne town team a 5-4 victory.

Wayne got on the scoreboard first in the third inning without a hit, as Dave Nuss reached base on an error was advanced

by two walks and when Terry Luff was hit by a pitch.

Norfolk scored a run in the fourth but Earl Overin threw three consecutive strikeouts to end Norfolk's hopes. Wayne's Bill Schwartz singled in the fifth and scored a run when the next three batters were walked.

Wayne gave up one Norfolk run in the sixth, but came back

with two scores in the seventh as Fritz Weible walked, and Meyer and Overin added back to back singles, to take a 4-2 lead.

Norfolk sent the game into extra innings with two outs in the ninth, as they scored two runs on three walks, a single, and a 2-1 victory.

Dave Hix scored the winning run for Wayne when he led off

with a walk, and was sacrificed to second by Luff's bunt. With two outs, Norfolk's fatal blow came when they walked the next three Wayne batters, to give Wayne a 5-4 win.

Mike Green pitched the win. Ray Nelson picked up two innings. Overin pitched four with five strikeouts, and Dave Hix added five strikeouts in three innings for Wayne.

WYANE	AB	R	H
Mike Sharer	1	0	0
Dave Hix	2	1	1
Bob Nelson	1	0	0
Terry Luff	2	0	1
Bill Schwartz	5	1	1
Mike Green	1	0	0
Fritz Weible	1	1	0
Ray Nelson	4	0	0
Aaron Nissen	2	0	0
Mike Meyer	1	1	1
Earl Overin	4	0	1
Dave Nuss	2	1	1
Rad Cook	3	0	0
Monte Love	2	0	0
Marty Hansen	3	0	0
Totals	34	5	7

# sports



**Sholes Kountry Kids**  
The Sholes Kountry Kids 4-H Club met May 11 at the Sholes school.

Susan Burmester, president, conducted the meeting and Sherrill Burmester gave a report of the last meeting and read the treasurer's report.

Each of the members reported on the project that they plan to take in the new year.

Roley Isoms and Vernon Hilkmans served.

The next meeting will be June 8.

## Winside Honors to Kim Mann

Kim Mann was one of many Winside High School students who received honors at an Awards Banquet held Tuesday in the Winside City Auditorium.

Mann received the Annual Award in Academic Achievement and the National Choral Award, Outstanding Bandsman and a Fine Arts Letter in Fine Arts awards.

Fine Arts Awards: Student of the Year in Fine Arts, Michele

Brockmoller; John Philip Sousa Award, Darci Janke; Outstanding Art, Rhonda Topp; Outstanding Achievement in Speech and Drama, Alene George.

Academic Awards: Beginning Typing, Brenda Voss; Advanced Typing, Carol Baird; Bookkeeping, Kristi Duering; Auto Mechanics, Kevin Andersen; Building Construction, Pat Walker; Welding, Ron Holtgrew; Small Engines, Todd Greunke.

Student Council: Chuck Mann, president; Bill Thomas, vice president; Lori Jensen, Kathy Thomas, Carla Berg, Mary Bower, secretary-treasurer; Corinne George, Brian Foote, Sue Meierhenry.

Other awards included: Fine Arts Letters: Alene George, Janelle Gottberg, Paula Hoemann, Darci Janke, Chuck Mann, DeLana Maroz, Bev Rubek, Rhonda Topp, Jeff

Wernemunde, Melodi Westerhaus, Joel Broekemeier, Laurie Galup, Sue Meierhenry, Colene Miller, Steve Morse, Linda Thies, Becky Westerhaus, Robyn Winch, Kerlane Benschhoff, Mary Bowder, Joan Bowers, Deb Brockman, Michele Brackmoller, Tim Cole, Corinne George, Bill Gottberg, Diann Heinemann, Connie Jaeger, Dawn Janke, Julie Krajkick, Kim Lage, Kim Leighton, Lori Meyer, Marci Thomas, Carla Berg, Susa Coulter, Krisi Duering, Delta Holtgrew, Lori Jensen, Tom Koll, Lisa Longnecker, Ann Mann, Brent Miller, Mitch Pfeiffer, Bruce Smith, Lori Thies, Kathy Thomas, Eric Vahikamp, Brenda Voss, Randy Wills, Carol Baird, Elizabeth Broekemeier, and Curt Carlens.



PAULA HOEMANN was selected Winside Female Athlete of the Year.

## Winside Honors Athletes

Letters and special awards were presented to Winside athletes at the annual Winside Awards Banquet Tuesday. Letter winners were too numerous to list but other award winners are listed below:

**Male Athlete of the Year** — Russ Longnecker  
**Female Athlete of the Year** — Paula Hoemann

**Girls Track**  
Most Valuable — Kathy Thies  
Most Improved — Laurie Gallop

**Volleyball**  
Most Valuable Player — Paula Hoemann  
Most Improved Player — Marci Thomas

**Football**  
Lineman of the Year — Bill Thomas  
Backs of the Year — Ed Morris, Mitch Pfeiffer

**Wrestling**  
Most Valuable Wrestler — Bryan Svoboda  
Most Improved Wrestler — Tom Koll

Special awards were not presented in boys' track and basketball.

**Girls Basketball**  
Most Valuable Player — Paula Hoemann  
Most Improved Player — Kathy Thies

## Faculty Members In Danforth Program

Wayne State faculty members Sayre Anderson and Russell Rasmussen and their wives have been appointed to the Danforth Foundation Associate Program.

The program is designed to strengthen student-faculty relations and to improve teaching-learning processes at colleges and universities.

Anderson and Rasmussen will represent the Danforth-Foundation on the Wayne State campus, working with students and other faculty. Gene Schwilck, president of the Danforth Foundation, said the Associates "encourage the humanizing of the learning experience in colleges and universities and increase the effectiveness of learning and teaching on college campuses."

As Danforth representatives, Anderson and Rasmussen are also eligible to apply for grant funds for projects aimed at improving the quality of faculty-student relations at WSC.

Anderson, an English instructor at WSC, has been active with the WSC Center for Humanities and has served as associate editor of the WSC history magazine, "The Midwest Review."

Rasmussen, a chemistry professor at WSC, has also been active with the Center for the Humanities, the Young Democrats and numerous other organizations at WSC.

Inductees into the National Honor Society Nancy Thies, Curt Carlens, Lori Jensen, Mary Bowder, Kathy Thies, Dawn Janke, Kim Leighton, Marci Thomas, Julie Krajkick, Corinne George.

Chuck Mann served as master of ceremonies. Those presenting awards were Mrs. Kenneth Flier, Lance Bristol, Stan Dedermen and Vincent Baudreau, music and fine arts; Jim Winch, Randy Mumpal, Sam Colvin and Kathy O'Connor, athletics; Mrs. Robert Jensen, Dallas Puls, Terry Munter, academic; Lee Johnson, student council; Al Schlueter, National Honor Society.

The Rev. G.W. Gottberg of St. Paul's Lutheran Church gave the invocation and the benediction.

The event was sponsored by the Winside Community Club in cooperation with the Winside School Student Council.

## COLLEGE WORLD SERIES

Omaha's Rosenblatt Stadium is the home of amateur baseball's premier event—the College World Series. On June 2-9, teams from all over the country compete for the recognition of being "the world's best" college baseball team.

Though still amateurs, the college players play with the class of the pros and with the enthusiasm of young men dedicated to the old alma mater. And each June thousands of fans are treated to a week-long baseball extravaganza equal to any major league game.

The college and university teams invading Rosenblatt are the cream of the crop. UCLA powerhouse such as Arizona State, USC and UCLA ensure that there is never a dull moment. The College World Series introduces players who soon will be the majors' headliners.

**Future Feeders**  
The Future Feeders 4-H Club met Tuesday at the Northeast Station, Concord at 8 p.m. Roll call was answered with "My Favorite Dessert."

Veri Carlson gave a demonstration on "Talk on Fishing." Stan Starling, county agent, was a visitor. Dennis Forsberg and Clayton Kardels served lunch. Rachel Dahlquist, news reporter.

**Hi-Raters Girls**  
The Hi-Raters Girls 4-H Club met May 10 at the Grace Lutheran Church. Ten members answered roll call.

Michelle Kubik gave a demonstration on "We Know What You're Looking For" which was about what and how to look for when you are buying meat. They also worked on favors for the hospital trays for the month of June.

Games were furnished by Jennifer and Sandy Utscht. The Dwayne and Lowell Rethwishes served.

The yearly family picnic for Hi-Raters boys and girls and their families is scheduled for June 4 at Bressler Park in Wayne at 1 p.m.

The next meeting will be held June 8 at the Grace Lutheran Church.

Pam Maier, news reporter.

# OFFICIAL INDOY "500" PACE CAR

## NOW ON DISPLAY

### WE SET THE PACE ON DEALS

<b>NEW '77 MONZA TOWN COUPE</b> Tinted glass, body side mouldings, wheel opening mouldings, remote control mirror, white tires, radio, power steering, 4 speed, 4 cylinder engine, with a 60,000 mile or 5 year warranty. <b>\$3595</b>	<b>'78 NOVA</b> 4 door, 6 cylinder, automatic, deluxe belts, tinted glass, body side mouldings, wheel covers, white tires, radio, power steering, power brakes. <b>\$4495</b>
<b>'77 MONTE CARLO</b> 305 V-8, T.H.M., tinted glass, body side mouldings, air conditioning, white radial tires, radio, power steering, power brakes. <b>\$5555</b>	<b>'78 CAMARO LT. COUPE</b> 305 V-8, T.H.M., deluxe belts, tinted glass, body side mouldings, floor mats, door edge guards, air conditioning, tilt wheel, white radial wires, AM-FM radio, rear speakers, console, style, trig group, silver outside, carmine inside. <b>\$5095</b>
<b>'78 MALIBU CLASSIC STATION WAGON</b> 305 V-8, T.H.M., tinted glass, body side mouldings, air conditioning, white tires, radio, power steering, power brakes. <b>\$5555</b>	<b>'78 IMPALA</b> 4 door, 305 V-8, T.H.M., tinted glass, remote control mirror, radio, tilt wheel, body side mouldings, wheel opening mouldings, full wheel covers, white tires, power steering, power brakes. <b>\$5695</b>

# CORYELL AUTO CO.

Just West of Wayne on Hwy. 35 — Phone 375-3600

### EMGY THAT!

**BASKETBALL** WAS INVENTED BY WILLIAM MOULTON BISHOP IN 1891 WHEN HE WAS WORKING WITH THE SPRINGFIELD MASS. "TRUCK" STORES. BISHOP HAD PLAYED EVERYWHERE IN THE WORLD.

**IN THE U.S. ARMY** MOST POSTS HAVE BASKETBALL COURTS. THE ARMY BASKETBALL TEAM HAS WON THE NATIONAL AAU CHAMPIONSHIP AND WORLD MILITARY GAMES!

### Health Tip OF THE WEEK

**AN EAGLE TWO** was recorded by Randy Simonson in the Wednesday night golf league. He drove the green on the seventh hole (359 yards) and sank his putt. John Fugelberth fired a 36 on the back nine holes in a unique way that same night. He recorded a four on every hole.

## Randy's RECAP

According to Randy Hascall

**MOST SCHOOLS** are out for the summer and the Wayne summer baseball season is about to begin. The town team played Norfolk in a practice game Wednesday and came out on top. The N.E. Nebraska League has 42 teams this year. Wakefield, Homer, Ponca, Newcastle, Ohawda (Iowa), and Wayne. League play will begin soon.

**THE AMERICAN LEGION AND MID-GET SEASONS** are also rapidly approaching. Coach Hank Overin said practice will begin today (Monday) for both squads. The Widgets will practice from 6:15-7:45 p.m. and the American Legion team from 7:45-9:15 p.m. every Monday, Wednesday, and Friday.

Players who cannot make it to the first practice should contact Coach Overin to get their names on the roster.

**SEVEN MONTHS AGO**, Jimmy the Greek gave odds of 1,500-1 against a Washington-Seattle matchup in the NBA Championship series. Today, I wish I would have bet money on that.

Seattle and Washington began the series last night (Sunday) in Seattle. Both had rough roads in the playoffs but finally put away the Philadelphia 76ers and the Denver Nuggets.

The Sonics will be tough to beat at home with a 20 game win streak on their own court, but the Bullets should give them a run for their money.

**REMEMBER RICH GLOVER?** The former Husker star is restless again and signed with the British Columbia Lions. Glover spent one year in Washington State coaching the defensive line. His last attempt to play professional football was in 1976 when the Philadelphia Eagles released him. Let's hope he does better in the Canadian League.

## If You Go Thirsty Memorial Weekend —

### ... IT'S YOUR OWN FAULT!!

PRICES EFFECTIVE —  
Tue., May 23 thru Mon., May 29

<b>BUDWEISER</b> 12 Pak <b>\$310</b> Warm ALL TAXES INCLUDED IN THIS SPECIAL	<b>BLUE RIBBON</b> 12 Pak <b>\$290</b> Warm
---	---

**4th JUG POLICY:** Buy a quart and receive a shot of the same brand for 1c.

**OPEN MEMORIAL DAY** For Your Carryout Convenience

# The 4th JUG

Ken Jorgensen, Owner  
102 Main Wayne 375-9958



## ALLIED LUMBER & SUPPLY

- Cooks Paint • Quonset Buildings
- Certain Teed Shingles
- Farm & Lumber Supplies
- Dayton Motors

*"Independently owned and striving  
to serve you better."*

**PHONE 375-2035 WAYNE, NE.**

Four Sound Ideas From




40-40 46-40  
44-40 48-40

### New & Used Tractors and Implements

- Sales • Factory Parts • Service
- Farmhand Equipment
- Stan Hoist — Gehl

## Logan Valley Implement

Wayne 375-3325



- ★ Liquid & Dry Fertilizer
- ★ Anhydrous Ammonia
- ★ Custom Spraying

**SHERRY BROS.**  
FARM & HOME CENTER  
Phone 375-2082

Parking  
West of Building



**case**

NEW HOLLAND SALES — PARTS SERVICE OMC

### RED CARR IMPLEMENT

Hwy. 15 North Wayne, Nebr. Phone 375-2685


## ELECTRIFY!

*Conserve fuels in short supply*

**"LIVE AND FARM  
BETTER ELECTRICALLY"**

### Wayne County Public Power District

Serving Wayne and Pierce Counties



**LOWER ELKHORN  
NATURAL RESOURCES  
DISTRICT**

P.O. Box 638  
Formerly the Trails Bldg. (South Hwy. 81)  
Norfolk, Nebraska 68701  
Phone: 371-7313

P.O. Box 1  
Clarkson, Nebraska 68629  
Phone: 692-3441

Ground & Surface Water  
Sanitary Drainage  
Fish & Wildlife

Water Supply Recreation & Parks  
Forestry & Range.

Erosion Prevention  
Floodwater and  
Sediment Control

Flood Prevention  
Soil Conservation  
Pollution Control

William Mayer — Chrm. — Pierce  
Bert Peterson — Vice-Chrm. — Lyons  
Dennis Newland — Sec. — Norfolk  
Bob Jordan — Treas. — Wayne  
Val Peterson — Director-At-Large — Wayne

Richard Hahn — Norfolk  
Howard Hansen — Laurel  
John Hansen — Newman Grove  
Harlan Hamernik — Clarkson  
Lowell D. Johnson — Wakefield  
Dale Lingenfelter — Plainville

Paul Millard — Leigh  
Glen Olson — Wakefield  
John Thor — Norfolk  
Clinton Von Seggern — Scribner  
Melvin Von Seggern — Craig  
Harold Wagner — Scribner

THE NRD BOARD THAT IS SINCERELY CONCERNED ABOUT PROPER RESOURCES DEVELOPMENT!

## YOUR MAIN STREET REALTORS



WE WANT TO BE YOUR LANDMEN

### MIDWEST LAND CO.

206 Main Street (375-3385) Wayne, Nebr.  
P.H. Ewing-M.A. Arneson-D.P. Ewing-P.M. Arneson

## IRRIGATORS SAVE MONEY — WATER — FUEL & FERTILIZER!!!

Lower Elkhorn Natural Resources District and Extension Offices in Cuming, Madison and Wayne counties are cooperating on an irrigation scheduling program. Weather stations near West Point, Battle Creek and Concord will be used to calculate crop water use and to record rainfall data. The crop water use will then be broadcast over local radio stations: KHUB — Fremont — 1340AM, KTTT — Columbus — 1510AM, KTCH — Wayne — 1590 AM and WJAG — Norfolk — 780AM. Hotline telephones will also carry the crop water use information. The following numbers may be called any time of the day to get the information:

**NORFOLK — 371-9300  
WAYNE — 375-1472  
WEST POINT — 372-2390**

Crop use information will enable irrigators to time irrigation for the most benefit and to take full advantage of moisture in the soil profile. Flow meters, soil probes, tensiometers, moisture meters and moisture blocks are tools that can be used by irrigators in conjunction with the scheduling program. County Extension Agents will hold evening meetings at the homes of irrigators to demonstrate the proper installation and use of these tools. Cuming County Extension Service will host meetings on June 1, 1978 at Russel Brahmer's farm, on June 5, 1978 at Jim Dinklage's farm, on June 6, 1978 at Dennis Knobbe's farm and May 31, 1978 at Louis Luebbert's farm. Wayne County Extension Service will conduct a similar meeting at a time and location to be announced later.

### Pumping Plant Efficiency

Irrigation Pumping Plant Efficiency is another area that can save money and fuel. Nebraska Performance Standards have been set up to gauge the efficiency of a pumping plant and determine if a savings can be gained by repairing or readjusting it.

Deon Axthelm, University of Nebraska, conducted a study in one NRD to determine how many irrigation pumping plants were operating at or above the Nebraska Performance Standard. The number of wells tested was 5,565 and the following table shows the results.

Percent of Wells	Units Operation at	Percent of Standard
9	Above	501 no problem
15	90-100	835 operation acceptable
35	75-89	1947 improvement possible
32	50-75	1781 improvement very possible
9	49-less	501 unacceptable

On those wells tested, diesel fuel use should be 2.2 gallons per hour if the pumping plant was 100 percent of the Nebraska Standard. For those pumping plants at 49 percent of the Standard, fuel use was 4.49 gallons per hour, or more than twice the expected fuel consumption. At 63 percent of Standard, the consumption was an additional 1.29 gallons per hour. While the costs vary according to energy source, it is obvious that substantial fuel savings can be gained by repair or adjustment of your pumping plant, if it is below 90 percent of the Nebraska Performance Standards. Savings can vary from \$100 to \$2,000 per well per year. Agricultural consulting firms or well drillers can test your pumping plant to determine its efficiency.

*The Natural  
Beauty  
of Wood...  
RECREATED IN*



## PLAS TEX Steel Siding

*Vinyl fused to Steel*

### MARRA

Home Improvement Company

East Hwy. 35 Phone 375-1343



See Us For

- Crushed Rock • Sand
- Concrete • Gravel

*"Pick Up or We Deliver"*

## HUSKER

CONCRETE & GRAVEL CO.

Wayne (375-1990)
Wisner (529-6123)

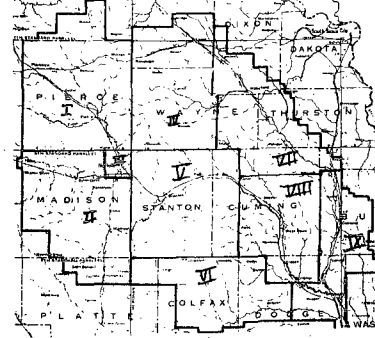
## WILDLIFE HABITAT PROGRAM

The signup period for the Wildlife Habitat Program for 1978 is over and the Lower Elkhorn NRD has approved contracts on over 1300 acres of private land, at a cost of approximately \$22,000. Of the 60 new contracts, 33 have agreed to allow public access for hunting, fishing, hiking and trapping. These areas will be designated by Wildlife Habitat Program signs. With existing contracts, there are now over 2500 acres of land in the Wildlife Habitat Program in Lower Elkhorn NRD with 1460 acres available for public access.

## ELECTION OF LOWER ELKHORN NRD DIRECTORS IN NOVEMBER GENERAL ELECTION

One Director in each of the nine subdistricts and the Director-at-large will be elected at the general election in November. In order to run for Director of the Natural Resources District, you must be a registered voter in the subdistrict you are running in or anywhere in the district if you are a candidate for Director-at-large. You must also have a petition with signatures of at least 25 registered voters from your subdistrict. These petitions may be up anytime at the Lower Elkhorn NRD office in Norfolk or any county clerks office. The petition must be filed with the Nebraska Natural Resources Commission by 5 p.m. August 10, 1978. The NNRC's address is 301 Centennial Mall South, P.O. Box 94876, Lincoln, NE 68508. The map right shows the boundaries of the subdistricts.

For more information contact the Lower Elkhorn Natural Resources District Office.



## Calendar of Events

May 25, 1978 — 8:00 p.m. — Board of Directors Meeting at the Laurel City Auditorium — Laurel, NE  
June 6, 1978 — Hydrology Workshop — NARD — Lincoln, NE



**STATE-NATIONAL  
FARM  
MANAGEMENT CO.  
REAL ESTATE  
SALES — LOANS**


- Check Our Listings Before You Buy
- Complete Farm Management

*"We Support Soil and Water Conservation"*

### State-National Farm Management Co.

Henry Ley — Brokers — Felix Dorcay  
Wayne 375-2990

## Soil Conservation Service



307 Pearl  
Ph. 375-2733  
Wayne, Nebraska

Public Service Message Courtesy of The Wayne Herald





UPW Plans to Serve Ice Cream Social

Plans were made for serving the annual ice cream social that is sponsored by the Bethany Cemetery Association when the United Presbyterian Women met at the church fellowship hall Wednesday.

The event will be May 28, beginning at 5:30 p.m. at the Presbyterian church fellowship hall.

Mrs. Leonard Pritchard opened the May 17 meeting and secretary and treasurer's reports were read by Mrs. Lem Jones and Esther Batten. Mrs. Jones accompanied for the singing of "Fairrest Lord Jesus," and she gave the lesson, "Release to the Captive." Mrs. Milton Owens served for the meeting. Mrs. Frances Axen will have the lesson for the June 7 meeting, and Esther Batten will serve.

Sunday Guests

The Wesley Williamsons, and Jack and Mary of Lincoln spent the Mother's Day weekend in the Ervin Wittler home. Joining the group for dinner and supper

May 14 were the Melvin Jenkins, Ames, Ia., Mrs. William Wittler, Randolph, and the Murray Leicys, Duane and Will.

Mrs. Lyle Cunningham went to Sioux City May 14 to visit her parents, the Leo Meiers, who are both hospitalized. The James Townsend family and Roy Bethune, all of Grand Island, and the Merle Bethune family of York were Mother's Day guests in the Lester Bethune home.

May 9 the Lester Bethunes went to Lake View, Ia., and were overnight guests in the Louie Bethune home. The Bethunes went to Storm Lake, Ia., to visit their son and family, the Bob Bethunes, and returned home Thursday.

Grad Services

The Lowell Rohlfis and Larry attended graduation services for Donna Rohlf at Tilden May 6 and were luncheon guests in the Duane Rohlf home, Meadow Grove. Lowell and Duane are brothers.

The Melvin Magnusons and Dennis and the Ron Magnusons and Krista went to Fremont May 14 for the college graduation exercises for Denise Magnuson, daughter of the Wallace Magnusons of Laurel.

The Darrell French family went to Mapleton, Ia., May 14 and had dinner in the home of her brother, Alvin Christophersons. In the afternoon they all attended graduation services for Dan, son of the Alvin Christophersons.

Susan Nagal of Neligh spent the Mother's Day weekend in the Melvin Dowling home. Mrs. Nagal and the Dowlings attended graduation exercises at Northeast Technical Community College May 13 honoring Wayne Dowling, who received his diploma in automotive mechanics. He is the son of the Melvin Dowlings.

Wayne Dowling of Norfolk and the Milton Bethunes and sons, Long Pine, and Susan Nagel were May 14 dinner guests in the Dowling home. In the evening the group attended baccalaureate services in Randolph honoring Marilyn Dowling, daughter of the Melvin Dowlings.

Happy Workers

Anna Hansen was the Wednesday hostess for the meeting of the Happy Workers Social Club. All members were present and a Mother's Day gift exchange was held.

Lena Rethwisch won high prize at 10-point pitch, Mrs. Russell Hall, low, and Mrs. Lyle Cunningham, traveling.

Lena Rethwisch will be the June 21 hostess.

Clara Slattery and Frances Huey, both of Tulsa, Okla., came to Carroll April 15. Frances is a resident of the Colonial Manor in Randolph, and Mrs. Slattery has moved to the home of the late Orle (Nig) Hurbert, where she will reside. Mrs. Slattery is a niece of Mrs. C.H. (Mary) Morris and a cousin of Harold Morris, who also lives in Carroll.

Guests May 5 in the Lowell Rohlf home for the birthday of the host were the Gus Kolls and Martha Knoll, all of Wayne, the Edgar Maroztes, the Warren Marozt family and the Chester Maroztes and Kurt, Dora Ritze and the Adolph Rohlfis, all of Winside, and the Wittbur Heftis.



Learning by Doing

LEARNING THROUGH EXPERIENCE is the biggest advantage of the Learning by Doing class of Wayne High. The class, taught by Mike Mallette, insulates, panels, paints, finishes, stains, and builds doors; bookcases, and gun cabinets for people as well as putting in fences. Clients pay for all materials plus a 20 percent fee which goes to the school for new equipment and supplies. Above, some students put in a fence for Bob Sherry and Clayton Fegley. From left to right are Dave Watts, Donavon Doescher, Schmale, Dean Carroll, C. Nelson, and Amy Ploor. Below, students remodeled the basement of the Jim Paige home. From left to right are Kevin Murray, Steve Bodenstedt, Mark Helthold, Bryan Ruwe, Roger Myers, and Mark Tietz. Anyone looking for work to be done next year should contact Mike Mallette this summer.

Advertisement for a wise investment in your future, featuring a small image of a house and text about savings and investment services.



The most effective way to get a speck out of the eye is to lift the upper lid over the lower and let tears wash the eye clean. For tips on first aid in eye emergencies, write to the National Society for the Prevention of Blindness, 79 Madison Avenue, N.Y., N.Y. 10016.

Advertisement for THE BIRCHMONT Rutger ON LAKE BEMIDJI, listing amenities like a casual luxury family resort, waterskiing, sailing, canoeing, and various dining and lounge options.

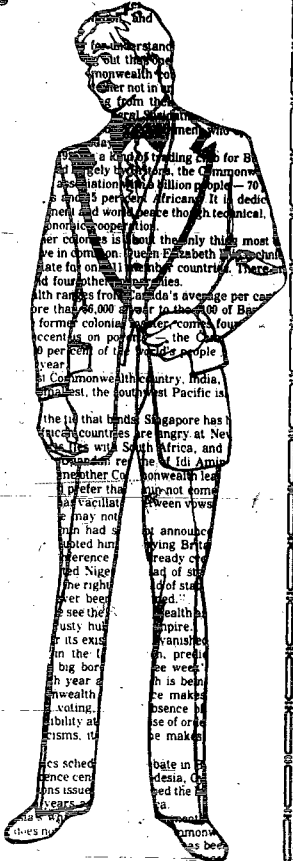


May 18 - Police investigated an accident reported at the Apca parking lot. The accident involved Robert E. Reinhardt, who was backing up a pickup and struck a light pole.



What are you (your estate) worth on paper?

Total up exactly what you're worth. Value of your home and car. Savings. Insurance. Stocks. Pension Plans. Turn out to be more than you thought? What if you were suddenly out of the picture? Is your will up to date? With the constantly changing laws will your executor have all the necessary information concerning your estate? Talk to your lawyer and then discuss the status of your estate with one of our trust officers. One visit and you'll know why so many of your neighbors have placed their trust in us.



The State National Bank and Trust Company, Wayne, NE 68787, (402) 375-1130, Member FDIC, Main Bank 122 Main, Drive-In Bank 10th & Main.

Representative Letters For 'Mother of the Year'

Some 200 entries were received in the Wayne area "Mother of the Year - 1978-79" contest in which Mrs. J. Liska, Wayne, was awarded the honor. While it is impossible to print all of the letters, the following were selected by the judges as being representative. Mrs. Darlene Smith, RR 1, Wayne: she is a very hard worker. She helps me out and she cleans house every day. One day I cleaned out my drawer and I was having trouble trying to get it back in. So mom came and helped me. My mother should be mother of the year. Mrs. Susie Pflueger, RR 1, Wayne: She lets me buy my own blue jeans. And my Mother let me buy flowers and make a card for my grandparents. Mother hugs me when I go to bed. She reads me stories when I am sick or have a car ache. Mrs. Monica Loberg, Carroll: When we complain about doing chores, she reasons with us, but never complains herself. She bakes, cleans house, raises a garden. She takes care of us and loves us. She's the first one up in the morning. She is very unselfish. Mrs. Evelyn McDermott, Wayne: To me my mother is the most beautiful woman in the world. She is very kind and understanding. She has raised me very good, and I love her very much. Mrs. Kenneth Frevert, RR 1, Wayne: My mom has all the qualities of being a good mother. She puts her husband and children first in everything she does. Mrs. Bev Voss, Winside: I think my mother should be mother of the year because: I am a diabetic and mom must give me my shot every morning at 7:30 and measure out all my food. She raises a big garden to can special food for me. Mrs. J. Liska, Wayne: My mother... what a most tremendous woman. I think she deserves to be mother of the year because of all she has contributed to our community, and surrounding area. The Key to Fast, Low-Cost Auto Financing advertisement is also present.



## THE REAL McCOY

### *You'll Get Genuine Results With Our Classifieds*

Shop and compare. You'll discover that when you're looking to buy anything at all, be it a product or a service, the fastest and surest way to find just what you want is with our Want Ads!

The same holds true when you've something to sell. By using our Classifieds to market your house, your car, or your time... you can get the quickest response possible. And you'll find that

our low advertising cost is one of the biggest values in town!

Let's look at the facts: Our circulation is wide, and our readership is wide. More people do business through our Classifieds because they know they'll reach more people that way!

So before you spend time shopping all over town... shop around, in our Classifieds.

# THE WAYNE HERALD & THE MARKETER

*Combined Circulation of 7,500*

**Phone 375-2600**

# IT'S EASY TO BUY-SELL-RENT-HIRE & FIND WITH WANT ADS

## Help Wanted

**WANTED:** Plumbers, sheet-metal journeymen, mechanical engineer or engineers assistant; certified pipe welders experienced in heavy industrial and commercial mechanical pipe fitting and welding. Must be certified or certifiable. Only experienced need apply. Year around employment. Excellent fringe benefits. An Equal Opportunity Employer. Kinning and Reil Inc. 371-8840. Terry Gilster. m1814

**HELP WANTED:** Part-time social worker. Position for July and August 1978. Region IV is an Equal Opportunity Affirmative Action Employer. Apply to Region IV Services, 206 Logan, Wayne. Ph. 375-4884. m2213

**RADIATORS REPAIRED**  
We do the job right!  
**M & S RADIATOR**  
419 Main  
Phone 375-2811

**Part-Time World Herald Distributorship** available in Wayne. Must be dependable and have aptitude for working with youngsters. For more information call collect 444-1000, Ext. 492. Chick Barker.

**WANTED:** Shop machinist. Experience desirable, but will train. Group insurance, paid vacation. Apply at Koplin Auto Supply, 213 W. 1st St., Wayne.

**Wanted**

**JOB WANTED:** Two hard working college students need job. Phone 375-1331. m2213

**For Rent**

**ROOM FOR RENT** to girls. Across street from campus. Phone 375-4455. m1814

**TWO BEDROOM** apartment for rent. Call 375-4655. m1812

**TWO-BEDROOM** basement apartment for rent. Available June 1. Call 375-2767. m111f

**FOR RENT:** Newly redecorated one bedroom apartment. Stove and refrigerator furnished. Air conditioned. Available June 1. Phone 1375-1885. m111f

**READ AND USE WAYNE HERALD WANT ADS**

## Special Notice

### NOTICE TO BIDDERS

Sealed proposals will be received by the Board of Education of Wayne, Nebraska, until 8 p.m., Monday, June 12, 1978, for furnishing labor and materials required to construct a storage building in accordance with the plans and specifications available at the office of the district superintendent.

Separate proposals are requested for the following:  
Plan A. A 50' x 60' steel building with 10' eaves.  
Plan B. A 40' x 60' steel building with 10' eaves.

The buildings are to be located on a site immediately southeast of the present elementary school in Wayne.

No bidder may withdraw his bid for a period of 30 days after the scheduled closing time for the receipt of bids.

The board of education reserves the right to reject any or all bids and to waive any informalities in any proposals.

**Real Estate**  
**REAL ESTATE**  
THINKING OF SELLING YOUR HOME  
See or call us  
**PROPERTY EXCHANGE**  
112 Professional Building  
Where Real Estate is Our Only Business

### HOUSE FOR SALE IN LAUREL

Large two story home featuring living room, formal dining room, family room with sliding doors to deck, kitchen, laundry room and 1/2 bath on main floor. Second floor, four bedrooms, bath. Lower level, rec room with wet bar, bath and walk-out. Attached garage. Priced in \$50's. Call:  
**Chet Joslin Agency**  
StouxCity, Iowa  
(712) 277-8140

### Misc. Services

**FOR YOUR** grain storage erect a Ross or Super Steel Bin, either Hi-Moisture or Aeration systems. Call George Young 685-5252 Oakland or Russ Zicht 439-2353 Stanton. m15112

### Card of Thanks

WE WISH TO express our sincere appreciation to all our neighbors, friends and relatives for the kindness and sympathy shown during the recent loss of our dear father, grandfather, and great grandfather, Herbert Peters. We also thank those who sent cards, food, memorials, flowers, and visits to the hospital. Our appreciation also to Drs. Benthack, Dahlheim, O'Keefe, and Gary West, physicians assistant, and Providence Medical Center staff and Lutheran Community Hospital for their tender care. Your thoughtfulness will always be remembered. The family of Herbert Peters. m22

**READ AND USE WAYNE HERALD WANT ADS**



**Disco Dancers?**  
LOOKING MUCH like disco dancers are Wayne kindergarten students who are going through a motor perception program as a part of their preparation for the "big time" in the first grade.

## WINSIDE NEWS / Mrs. Ed Oswald 286-4872

### Citizens Plan Potluck

The Winside Senior Citizens met the afternoon of May 15 in the city auditorium with 17 present. Cards provided entertainment.

The group made plans to have a potluck dinner May 30 at 12:30 p.m. Bingo will be played. President Ella Miller presided at the May 15 business meeting. A donation was presented to the Winside Cemetery Fund in memory of deceased senior citizen members. Mrs. Miller read a poem in behalf of the deceased.

Sympathy cards were sent to the David Hancocks and to the families of Martin Pfeiffer and Herb Peters. Cheer cards were mailed to Mrs. Louie Walde and Meta Nieman.

Dora Ritze and Mrs. Gustav Kramer furnished ice cream and cake for their birthdays, and the group sang the birthday song for them. Mrs. Ben Fenske was the coffee chairman. The next meeting will be May 23.

**Final Meet**  
The Jolly Couples met for their final meeting of the season Tuesday evening in the F.C. Hill home. Prizes were won by Werner Janke and Mrs. Don Wacker. Meetings will resume in September in the Lloyd Behmer home.

**Modern Mrs.**  
The Modern Mrs. met Tuesday afternoon in the George Voss home for the last meeting of the season. Guests were Mrs. Ben Benschopf and Mrs. Robert Koll.

Prizes were won by Mrs. Frank Weible and Mrs. Gary Kant, and each of the guests. The September meeting will be in the Russell Prince home.

**Pitch Pitch**  
The Pitch Club met Tuesday

**BARBECUE TIME IS ANY TIME**

Good grillmanship begins by knowing how to build an even-burning charcoal fire. Start by stacking the briquets in a pyramid. They'll light faster this way because the air can circulate around the briquets.



Before you put the food on your charcoal grill, be sure you have a bed of evenly burning coals, point out experts at the Barbecue Industry Association. It will take about 20 to 40 minutes for the coals to burn to the right state. When they're ready, they'll be covered with a layer of grey ash during the daytime and turn a bright red at night.

evening in the Delmar Kremke home. The George Farrans received prizes. Next meeting will be June 20 in the Vernon Hill home.

**Girl Scouts**  
Junior Girl Scout Troop 168 met May 15 at the city park to pick up cans and sticks. Eight scouts and leaders Mrs. Lee Gable and Mrs. Duane Field attended.

Following cleanup the group ate at Will's Cafe. Meetings will resume in the fall.

**Pack Meets**  
Cub Scout Pack 179 Dean 2 met Tuesday in the park for a wiener roast. Games provided entertainment.

The scouts will pick up papers on the first Saturday of each month during the summer as they have done in the winter. Furnishing treats for the roast were Michael Thies, Kevin Jaeger, Ryan Prince, Tim Voss, Brian Morse and Michael Gable.

**Birthdays Honored**  
Guests Tuesday afternoon in the Mickey Topp home for the fifth birthday of Trevor were Shannon and Jason Bargstad, Chris Janke and Mark Brugger. Shannon and Jason were overnight guests.

The Birthday Club met May 15 in the Albert Jaeger home to observe the birthday of Mrs. Jaeger. Five attended. Mrs. Otto Herrmann became a member.

Cards provided entertainment and a cooperative lunch was served.

### Sixth Grade Party

The Alfred Millers sponsored a sixth grade party at the school the evening of May 15. Mrs. Miller is the sixth grade teacher. Coffee provided entertainment with prizes going to Kim Schlueter, Melissa Farran, Shell Topp, Chad Farrans, Kyle Miller, Dan Oswald and John Brudgton.

### Confirmation Dinners

Guests May 14 in the home of Mrs. Robert George for a dinner to honor the confirmation of Bill from Trinity Lutheran Church were the Ronald Harmes and Lanita, Lincoln, the Bruce Jones and Brian, Columbus, the Robert Ginns, Bellevue, Ralph Kappes, Milford, and Mrs. Joe Popishil, Crete.

**KNOW THE SIGN OF COMPETENCE ...**

111 West 2nd  
Wayne, Ne.  
**FOR SALE**

STATE-NATIONAL FARM MANAGEMENT REAL ESTATE

375-2990

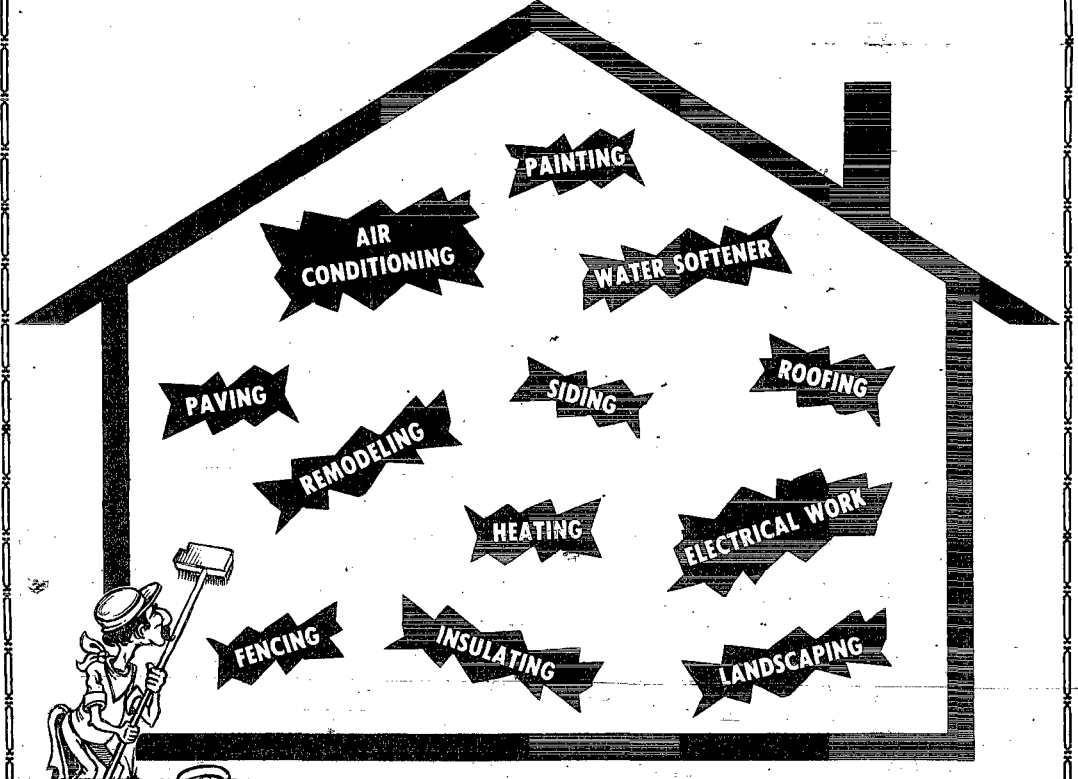
★ Appraisals  
★ Management  
★ Farms  
★ Residential  
★ Commercial

★ Sales  
★ Farm  
★ Residential

**SEE US TODAY!!**

## IT'S HOME IMPROVEMENT TIME

and here are just some of the reasons for getting a First National Bank Home Improvement Loan:



If there is need around your home for any type of improvements, the chances are you can finance the work with a First National Bank home improvement loan. We offer personal service plus same-day approval of applications, and the payments will be tailored to fit your budget. In addition, a FREE work-saving gift will be given on all loan approvals.

So come in and see us in The First Place, and get all the details on a First National Bank Home Improvement Loan.

**First National Bank**  
301 Main — Wayne — Phone 375-2525  
MEMBER F.D.I.C.

# MONDAY - TUESDAY WEDNESDAY ONLY!!!

# Specials

## SOFTBALL PLAYERS

Mon.-Tues.-Wed. ONLY!!  
AFTER YOUR LEAGUE GAMES THIS WEEK!



8-10 p.m.

All Bar Drinks — 50¢

All Can Beer — 50¢

### OPEN MEMORIAL DAY

For your carryout needs.

**OUR POLICY!** Buy a quart  
& receive a shot of the same brand for 1¢.

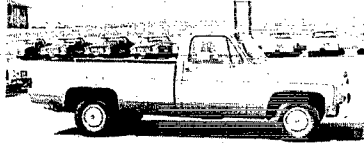
## The 4<sup>th</sup> JUG

Ken Jorgensen, owner  
Wayne

102 Main

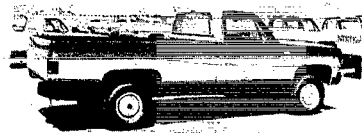
375-9958

## Get into a Chevrolet Pickup With a BONANZA PACKAGE



10 - Bonanza Package Units In Stock

- (6) 1/2 Ton — 4 wheel drive
- (3) 1/2 Ton — 2 wheel drive
- (1) 3/4 Ton — 2 wheel drive



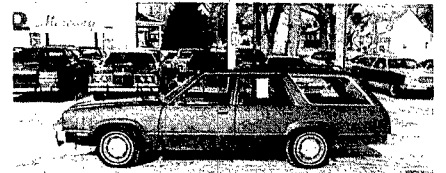
## CORYELL AUTO CO.

Chevrolet — Oldsmobile

West of Wayne on Hwy. 35 — Ph. 375-3600

## RENT ME

1978 Fairmont Wagon



\$10 a Day — 10¢ a Mile  
Gas not furnished.

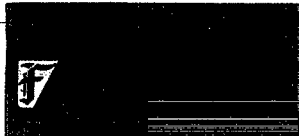
## ROY HURD

FORD-MERCURY  
119 East Third Street Phone 375-3780

Sherry Bros. has a  
Complete Line of



Homer Formby, nationally  
known authority on antique  
and home restoration



## FURNITURE CARE PRODUCTS

Restore The Beauty  
To Your Furniture

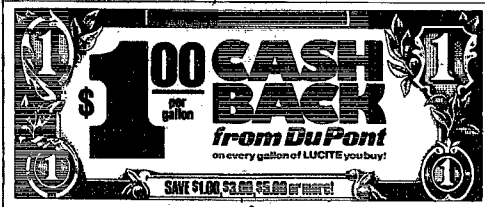
It's So Easy to Do!!



**SHERRY BROS.**  
FARM & HOME CENTER  
Phone 375-2082

## SAVE

## WITH LUCITE!



OUR LOW  
SALE PRICE **6<sup>96</sup>**  
Reg. 8.87  
LESS DU PONT'S  
CASH BACK **1<sup>00</sup>**  
YOUR COST  
AFTER  
RECEIVING  
DU PONT'S  
CASH BACK **5<sup>96</sup>**

OUR LOW  
SALE PRICE **7<sup>96</sup>**  
Reg. 10.40  
LESS DU PONT'S  
CASH BACK **1<sup>00</sup>**  
YOUR COST  
AFTER  
RECEIVING  
DU PONT'S  
CASH BACK **6<sup>96</sup>**

**DOUBLE  
SAVINGS!**  
Save with our low prices  
SAVE AGAIN with DuPont's  
\$1.00 per gal. CASH BACK!

**CASH BACK**  
Only one cash back per gallon of LUCITE® paint purchased between May 28 & June 11, 1978. Cash back will be issued in the form of a check payable to the purchaser. Cash back will be issued within 30 days of the purchase date. Cash back will be issued in the amount of \$1.00 per gallon of LUCITE® paint purchased. Cash back will be issued in the amount of \$1.00 per gallon of LUCITE® paint purchased. Cash back will be issued in the amount of \$1.00 per gallon of LUCITE® paint purchased.

NAME: \_\_\_\_\_ ADDRESS: \_\_\_\_\_  
CITY: \_\_\_\_\_ STATE: \_\_\_\_\_ ZIP: \_\_\_\_\_  
PHONE: \_\_\_\_\_

**RAMIDA and GIBSON'S  
DISCOUNT CENTER**

## Try Our Noon Menu

featuring

Reubens-B.L.T.'s-Crepes

Which Are Just A Few Of Our Noon Menu Items

**OPEN 11AM — 2PM**

We Serve Only USDA Choice American Beef!

**OPEN SUNDAYS**

11 a.m. to 2 p.m. — 5 p.m. to 9 p.m.

For Your Dining Enjoyment



Our Lounge is  
Open Mon. - Sat.  
at 11 a.m.

in Beautiful Downtown Wayne

## THE BOND THAT BREAKS:

Will Homosexuality  
Split the Church

by Don Williams

This book combines compassion and  
conviction. It blends a fresh contem-  
porary style with timeless truths. If  
you buy one book this spring, buy this  
one.

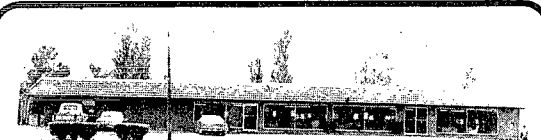
Reg. \$4.95

MON.-TUE.-WED  
SPECIAL

**\$3.95**

**WAYNE BOOK STORE**  
and Office Supply

219 Main — Wayne, Ne. — Ph. 375-3295



**FREE  
DELIVERY**

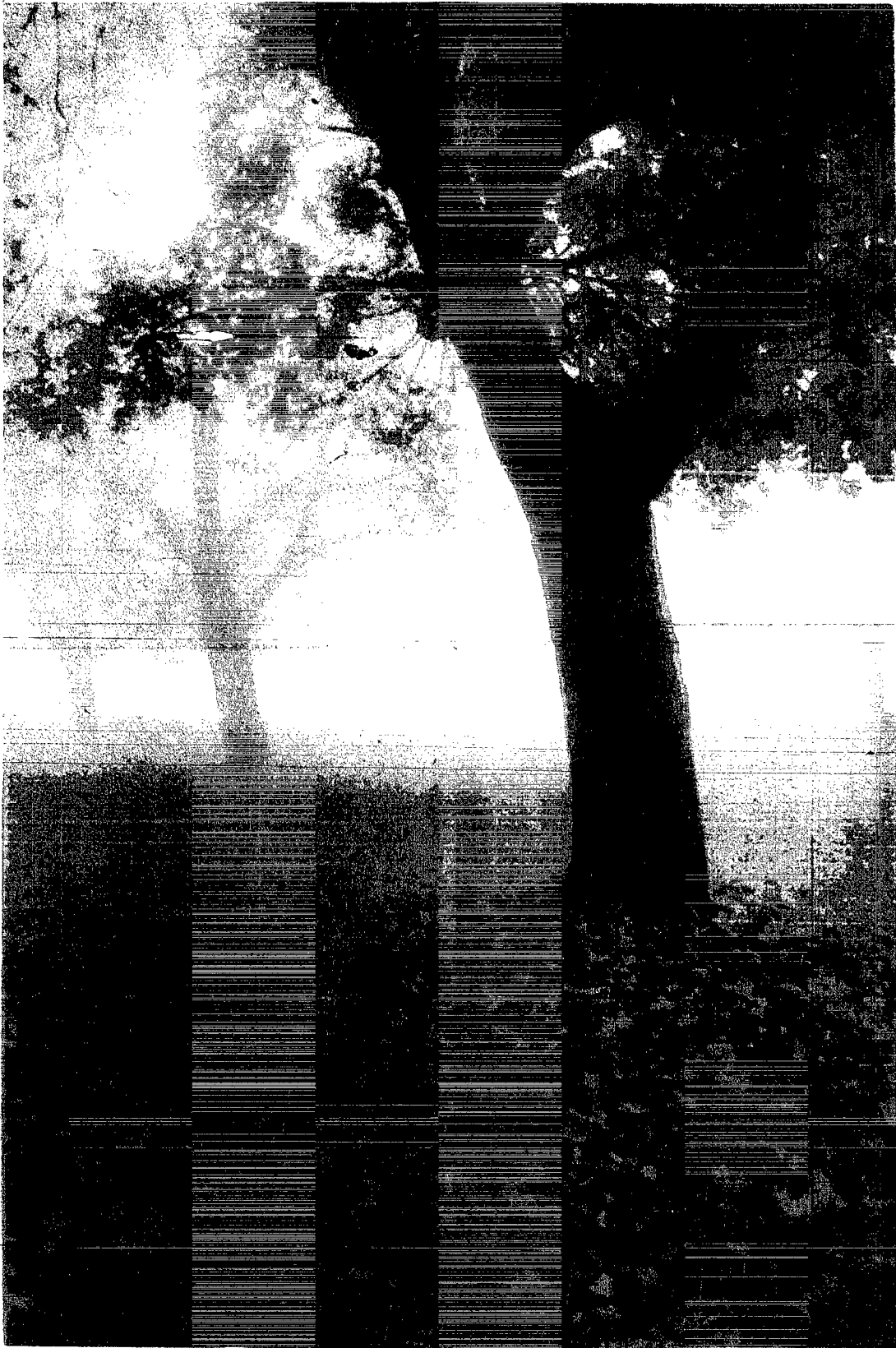
**FREE  
90 Day  
Interest**

Your Furniture Headquarters for N.E. Nebraska

# DISCOUNT FURNITURE

1 1/2 Miles North of Wayne, Ne

Go forth to meet the future . . .

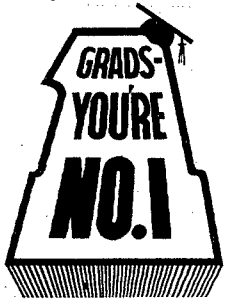


Honoring Graduating Seniors From

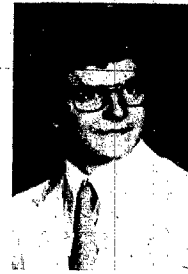
Allen, Laurel, Wakefield, Wayne and Winside

# SUCCESS TO YOU GRADS OF '78

## Allen High School



Harold Anderson



Donald Bock



Gary Brownell



Bryce Chapman



Brent Chase



Kenneth Dowling



Tod Ellis



Barbara French



Don Hanson



Steven Johnson



Terri Jones



Vincent Kavanaugh



Leetta Keil



Cheryl Koch



Daniel Koester



Sue Lanser



Kaye Linafelter



Ryan Lubberstedt



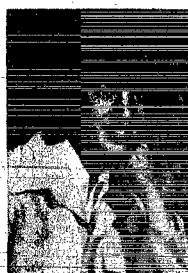
Rochelle Prescott



Monte Roebor



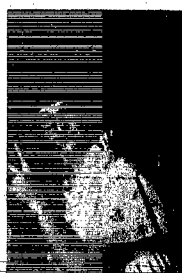
Colleen Roeder



Allen Roth



David Roth



Colleen Sachau



Ana Maria Seputveda



Lin Smith



Marsha Smith



Ricki Smith



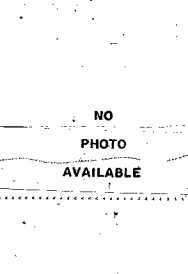
June Stapleton



Jerald Stewart



Randall Sullivan



Wendella Tibbetts



Leann Wood

**Anderson Sundry**  
**Ellis Electric**

**Country Girl**  
Phone 635-2442

**Mary Jean's**  
**House of Beauty**

**Tri-County Insurance**  
Wakefield — 287-2011 Allen — 635-2403

**Sally's Beauty Shop**  
Sally Roberts

**Carpenter Feed Store**

**Farmer's Co-op Elev. Co.**  
Phone 635-2312

**The Village Inn**  
George & Frieda Menkens

**Bobier Studio**  
South Sioux City — 494-5192

**The Cash Store**  
Phone 635-2325

**Security State Bank**

**Dixon Co. Feedlots, Inc.**

**Clifford Gotch**  
**Insurance**

NO  
PHOTO  
AVAILABLE

NO  
PHOTO  
AVAILABLE

## Dixie's Beauty Shop

Phone 256-3773



Tom & Jan Anderson

## Lee A. Dahl, D.D.S.

Phone 256-3231

## Laurel Lockers

Mel & Betty Olsen

## Laurel Medical Clinic

Dr. Tien H. Nguyen

## Laurel IGA

## Great Plains Supply

## Dwayne's Barber Shop

Phone 256-3564

## Felbers Rexall Drugs

Phone 256-3511

## True Value Hardware

of Laurel

## Laurel Feed & Grain

Purina Feed, Grinding, Mixing

Phone 256-3224

## Wiltse Mortuaries

of Laurel

## The Barn Door

## Security National Bank

of Laurel

## Chrome's Cone

Phone 256-3377

## Casey Music Company

## Logan Valley

## Construction Co., Inc.

## Ohio National

LIFE INSURANCE CO.

William L. Norvell, General Agent

## The Wagon Wheel

STEAKHOUSE & LOUNGE

Soon to be Reopened

## Gowery's Shopping Center

## Ron's Auto Parts

Phone 256-3811



# Laurel High School



Cheryl Abbs



Janet Anderson



Julie Anderson



Inna Arp



Randal Bloom



James Bose



Anna Borg



Donald Burns



Janel Campbell



Mark Christensen



Toby Cunningham



Robert Dahlquist



Mary Dickes



Kari Diediker



Amy Finn



Vern George



Elaine Guern



Diane Harrington



Lori Hartman



Larry Heese



Mitzi Hinrichs



Carla Johnson



Judith Johnson



Mona Johnson



Sally Johnson



Derwin Kardell



Anne Kneiff



Lori Leise



Melvin Loberg



Dean Lutz



Kurt Malchow



Michael Martin



Clyde Matthews



Glen Maxon



Charles Nelson



Jodene Nelson



Tracy Nelson



LaDonna Noe



Nina Oxyer



Linda Penlerick



Scott Pigg



James Rees



Diana Rhodes



Cynthia Schaeer



Nancy Schaeer



Lisa Schrieber



Lynn Schrieber



Marta Smith



Roger Stage



Susan Stark



Kathi Stohler



Kip Thompson



Deborah Urwiler



Charlie Vogle



Jana Wacker



Ann Wickett



Philipp Wiedenfeld



Dennis White

## Blue & Gold Beauty Shop

Concord, Nebraska

Associated Milk Producers, Inc.  
Phone 256-3264 - Laurel

## Laurel Ready-Mix

Leon May, Owner

The Friendly Tavern  
of Laurel

Senior Portraits by

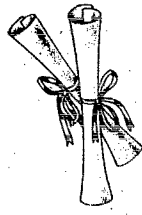
Genelli STUDIOS

Beehive Lounge





# Wakefield High School



Lyle Borg



Molly Brown



Heidi Carlson



Sandra Carson



Wayne DenHerder



Patricia Domsch



Verdell Ekberg



Beth Gard



Deborah Greve



H. Harley Greve



Gloria Hansen



Sharon Hanson



Susan Holm



Karen Johanson



Val Johnson



Bragley Jones



Michael Leonard



Larry Lundin



David Lunz



Connie Meier



Brent Meyer



Denise Miller



Robin Mills



Mary Minola



Patsy Murphy



Joy Myers



Craig Nelson



Tamela Nettleton



Kimberly Neuhaus



William Newton



Lisa Paul



Kimberly Polen



Timothy Prochaska



Penny Roberts



Marvin Ruzicka



LeAnn Salmon



Lauren Sampson



Kathleen Schwärten



Dean Sharp



Charles Sherer



Jeffrey Simpson



Sariyn Sundell



Nancy Taylor



Geraldine Urbanec



John Viken



Lorraine Woodward



Michael Wurdeman

**Rouse's Super Saver**

**Glenn's Body Shop**

**Farmers Union  
Co-op Exchange**

**Just a Barber Shop**  
*in Wakefield, Nebr.*

**Fullerton Lumber**  
*205 Main — Wakefield*

**Wakefield  
Locker Service**

**Wakefield Rexall Drug**

**Village Smithy**  
*Murfin Welding & Repair  
287-2112*

**Bobier Portrait Studio**  
*So. Sioux City — Phone 494-5192*

**The Fair Store**

**Rhodes Hardware**

**Trube's  
Standard Service  
Eaton Nursery &  
Greenhouse** 287-2622

**WAKEFIELD  
National Bank**  
287-2662 Member FDIC

**Milton G.  
Waldbaum Co.**

**Viken's V-Store**

**Bressler  
Funeral Home**

**Terra Western Corp.**

**Up-Town Cafe**  
*Bob - Betty Miner*

**GREAT PLAINS AUCTIONEERS  
& REAL ESTATE**  
*Wakefield 287-2252 West Point 372-5777*

**Johnson's Frozen Foods**

**Hansen's Grocery**  
Carroll, Ne.

**King's Carpet**

**The Wayne Herald**

**Karel's**  
Furniture — Water Systems

**McDonald's**

*Congratulations From*

**Andy's Pizza House**

**Kugler Electric**  
Russ Tiedtke, Owner

**Melodee Lanes**

**Surber's**  
Men's & Ladies' Store

**Kaup's TV**  
Phone 375-1353

**Wiltse Mortuary**

**Coast-to-Coast Store**

**H. McLain Oil Co.**  
Carroll, Ne.

**Northwestern Bell Telephone**

**L.W. (Bud) McNatt Hdwe.**

**Merchant Oil Co.**

**Wayne Federal**  
Savings & Loan

**State National Bank**  
and Trust Company

**Dean Pierson Ins. Agcy.** Phone 375-2969  
111 West 3rd

**Carhart Lumber Co.**

# *Congratulations* **Wayne High School**



Daniel Ahlvers



Lisa Allen



Larry Anderson



Jeff Backstrom



Kenneth Bethune



Todd Beiermann



Kelly Black



Laura Blenderman



Steven Bodensedt



Christina Brink



Fernando Brito



Nancy Brudigan



Scott Carhart



Dean Carroll



Jacqueline Conner



Cary Damme



Rane Dion



Donovan Doescher



David Draghu



Kirk Echtenkamp



Jeffrey Edmonds



Jeremy Edmonds



Clay Ellingson



Dawn Ellis



Dennis Flear



Lynn Frahm



LaVonne Francis



Ann Fredrickson



Kelly Frevert



Carol Fuoss



Gema Giese



Lori Grashorn

**Sears Catalog Store**  
George Gahl — 375-2400

**Wayne Grain & Feed**

**Morris Machine Shop**

**Ron's Steakhouse**  
Carroll

**Mid-America Art Studio**

**Marra Home Improvement**

**Sherry Bros. True Value**  
HARDWARE STORES

**Feeders Fertilizers & Chemicals**

**New York Life**  
Ken Gansbom, Agent

**Dick's Dairy Sweet**

Dick & Dee

**Griess Rexall**

**Kuhn's Dept. Store**

201 Main - Wayne, Ne.

**Hiscox-Schumacher**

Funeral Home Wayne & Carroll

**Pat's Beauty Salon**

**Property Exchange**

**Wayne Greenhouse**

Kent & Lois Hall

**Willis Johnson**

State Farm Insurance



**American Family Ins.**

BILL WOEHLE 375-4606

**Charlie's Refrigeration**

**Discount Furniture**

**Blake Studio**

**Thies-Brudigan, Inc.**

International-Harvester Sales, Parts & Service

**Koplin Auto Supply**

Automotive Parts - Wholesaling

**The 4th Jug**

Ken & Cynthia Jorgenson

**Kavanaugh Feed and Trucking**

Carroll, Ne.

**Fredrickson Oil Co.**

North Hwy. 15 Phone 375-3535

**Wayne Book Store**

**Roy Hurd Ford-Mercury**

**The Diamond Center**

(Formerly Dale's Jewelry)

Diamonds, Watches, Jewelry & Gifts



Neal Greenwald



Lesli Greunke



Laura Hagemann



David Hansen



Dianne Hansen



Kelly Hansen



Brian Haun



Scott Havener



Loren Heggemeyer



Mark Helthold



Jay Hummel



David Johnson



Lari Johnson



Kevin Kay



John Keating



Vincent Kniesche



Rodney Koch



Connie Kramer



Jay Langemeier



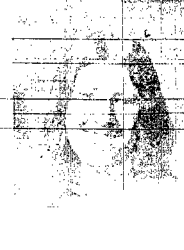
Brenda Larsen



Shari Lawrence



Ronnie Lippman



Katherine Loberg



Julie Maben



Patricia Manes



Peter Manes



Krista Marks



Tammy Maxson



James McCright



Charles McLain



Bryan Meyer



Sydney Mosley



Frank Mrsny



Beverly Munter



Kevin Murray



Roger Myers

**State National Farm Management**

**Sandahl Repair**

Carroll, Ne.

**Ellingson Motors, Inc.**

Pontiac, Cadillac, Buick, GMC Trucks

**Coryell Auto**

**Coryell Derby Service**

**Arnie's**

**Bob's Cleaning Service**

**Country Sportsman**

**Carr Implement**



Clint Nelson



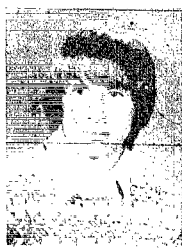
Lisa Nuss



Robin O'Donnell



Beth Ostendorf



Bryan Park



Donna Peterson



Marcia Peterson



Douglas Pierson



DeAnn Pokett



Gwen Preston



Darren Proett



Susan Rehwisch



Bryan Ruwe



Roger Sabs



Edward Schmale



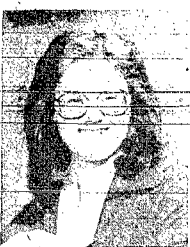
Keith Schuttler



Susan Schwartz



Victor Sharpe



Robinette Sherry



Mark Shufelt



Ginny Sievers



Gloria Splittgerber



Julie Sprouts



Lori Sturm



Joe Teeter



Judy Temme



Charlayne Thiel



Terri Thomas



Mark Tietz



Ronald Utecht



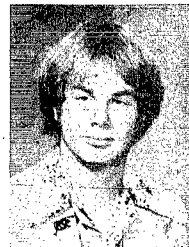
Kevin Voog



Scott Wandersee



Dale Watts



David Watts



Duane Westerhaus



Joleen Wiener

**Farmers State Bank**

Carroll, Ne.

**Doescher Appliance**

Sales & Service

**Swan-McLean  
Rusty Nail**

**Pat's Beauty Salon**

**Jeff's Cafe**

**Nelson Repair**

Carroll, Ne.

**Wittig's Food Center**



**Morning Shopper**

**Swans' Ladies Store**

205 Main St.

**El Toro**

Package Store & Lounge

**Amber Inn**

375-4222

**Rohde Body Shop**

Carroll, Ne.

**Shrader-Allen Hatchery**

Southeast 1st St.

Phone 375-1420

**Diers Supply**

**Wayne Shoe Co.**



**Sav-Mor Drug  
& The Loft**

**Ellis Barbers**

Loren - Doug - Darrell

**Bill's GW**

Owned & Operated by Luoders, Inc.

**Heritage Homes  
of Nebraska, Inc.**



FIRST NATIONAL BANK

**Wayne County  
Public Power District**

**People's Natural Gas**

**M & S Oil Co.**

**Eldon's Standard**

**Les' Steak House**

**Chrysler Center**

**Gambles**

"The Friendly Store"

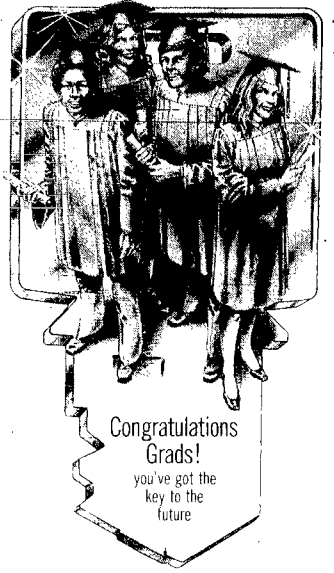
**Wayne Monument  
Works**



Hats Off  
To Grads!

# Congratulations

## Winside High School



Congratulations  
Grads!  
you've got the  
key to the  
future

**Witt's Cafe**

**Wacker Farm Store**

Parts & Service

**Winside State Bank**

Complete Banking Service

**Schmode-Weible  
Trucking**

**Miller's G.W. Market**

**Winside Grain & Feed**

**Ray's Locker**

**Tri-County N.S. Co-op**

Winside P-286-4277

**Winside Dehy Co.**

Phone 286-4491

**Wilva's Beauty Salon**

Phone 286-4988

**Lee & Rosie's Tavern**

Famous Broasted Chicken

**Commercial State Bank**

Hoskins - 565-4228

**Charlie's Bar**

Winside

**Hoskins Mfg. Co.**

Phone 565-4420

**Wiltse Mortuaries**

of Winside

Senior Portraits by  
**O'NEILL Studios**  
1300 Taylor Norfolk, No.



Brian Allemann



Kevin Andersen



Carol Baird



Daniel Brockman



Elizabeth Brockmeier



Curtis Carstens



Hugh Deck



Richard Doffin Jr.



Frank Farmer



Alene George



Janelle Gottberg



Jackie Gramberg



Paula Hoemann



Jan Jaeger



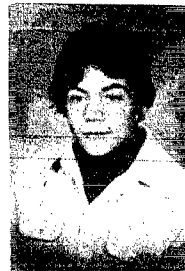
Darci Janke



Mary Keenan



Peg Langenberg



Russell Longnecker



Chuck Mann



Kim Mann



Delana Marotz



Laverle Miller



Edward Morris



Lori Prince



Bev Rubeck



Bryan Svoboda



Nancy Thies



Bill Thomas



Rhonda Topp



Pat Walker



Jeff Warnemunde



Daniel Westerhaus



Melodi Westerhaus



Gary Wylie

